



# Iowa Ag News – Cattle on Feed

Upper Midwest Region - Iowa Field Office · 210 Walnut Street Ste 833 · Des Moines IA 50309 · (515) 284-4340 · (800) 772-0825  
fax (855) 271-9802 · [www.nass.usda.gov/ia](http://www.nass.usda.gov/ia)

Cooperating with the Iowa Department of Agriculture and Land Stewardship

November 22, 2013

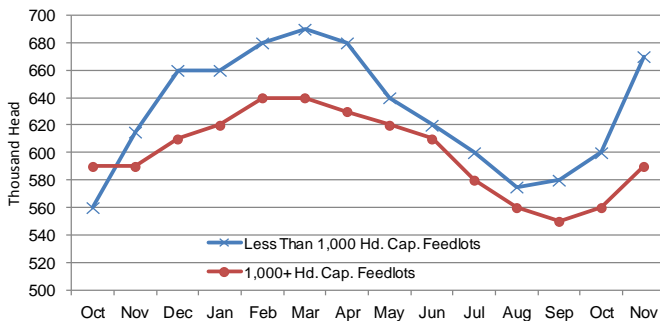
Media Contact: Greg Thessen

Cattle and calves on feed for slaughter market in Iowa for all feedlots totaled 1,260,000 on November 1, 2013 according to the USDA, National Agricultural Statistics Service, Iowa Field Office. The inventory is up nine percent from October 1, 2013 and up five percent from November 1, 2012. Feedlots with a capacity greater than 1,000 head had 590,000 head on feed, up five percent from last month but unchanged from last year. Feedlots with a capacity less than 1,000 head had 670,000 head on feed, up 12 percent from last month and up nine percent from last year.

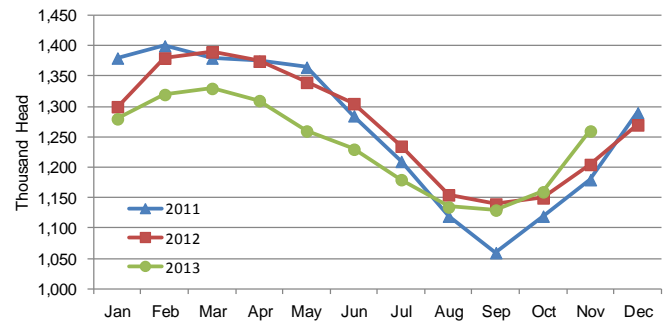
Placements during October totaled 292,000 head, an increase of 29 percent from last month and up five percent from last year. Feedlots with a capacity greater than 1,000 head placed 128,000 head, up 27 percent from last month but down 12 percent from last year. Feedlots with a capacity less than 1,000 head placed 164,000 head. This is up 31 percent from last month and up 24 percent from last year.

Marketings for October were 187,000 head, down two percent from last month and down 14 percent from last year. Feedlots with a capacity greater than 1,000 head marketed 96,000 head, up eight percent from last month but down 33 percent from last year. Feedlots with a capacity less than 1,000 head marketed 91,000 head, down 10 percent from last month but up 21 percent from last year. Other disappearance totaled 5,000 head.

**Cattle on Feed, Inventory by Feedlot Capacity, Iowa: Current Month & Past 12 Months**



**Cattle on Feed, Inventory on all Feedlots, Iowa: 2011-2013**



## All Cattle on Feed, Iowa

Item	Lots 1,000+ Head	Lots Less than 1,000 Head	All Lots
	(1,000 Head)	(1,000 Head)	(1,000 Head)
Cattle on Feed, October 1, 2013 .....	560	600	1160
October Placements .....	128	164	292
October Marketings .....	96	91	187
October Other Disappearance .....	2	3	5
Cattle on Feed, November 1, 2013 .....	590	670	1,260

## Cattle on Feed: Number on Feed, Placements, Marketings, and Other Disappearance by Month, 1,000+ Capacity Feedlots

[Cattle and calves on feed are animals for slaughter market being fed a ration of grain or other concentrates and are expected to produce a carcass that will grade select or better.]

State	Cattle on Feed November 1			Placements during October			Marketings during October			October Disappearance other than Slaughter <sup>1</sup>		
	2012	2013	'13 as % of '12	2012	2013	'13 as % of '12	2012	2013	'13 as % of '12	2012	2013	'13 as % of '12
	(1,000 Head)	(1,000 Head)	(Percent)	(1,000 Head)	(1,000 Head)	(Percent)	(1,000 Head)	(1,000 Head)	(Percent)	(1,000 Head)	(1,000 Head)	(Percent)
Arizona .....	265	270	102	19	28	147	25	25	100	1	1	100
California .....	480	505	105	62	61	98	54	52	96	3	4	133
Colorado .....	1,030	950	92	195	230	118	160	145	91	5	5	100
Idaho .....	240	220	92	55	56	102	44	45	102	1	1	100
<b>Iowa</b> .....	590	590	100	146	128	88	143	96	67	3	2	67
Kansas .....	2,220	2,050	92	380	470	124	365	400	110	25	20	80
Nebraska .....	2,480	2,370	96	590	630	107	425	455	107	15	15	100
Oklahoma .....	345	270	78	65	65	100	54	78	144	1	2	200
South Dakota ..	220	200	91	71	59	83	45	38	84	1	1	100
Texas .....	2,670	2,530	95	450	530	118	440	440	100	20	20	100
Washington .....	248	203	82	74	59	80	38	39	103	1	1	100
Other States ....	466	449	96	73	78	107	44	43	98	2	3	150
United States ..	11,254	10,607	94	2,180	2,394	110	1,837	1,856	101	78	75	96

<sup>1</sup>Includes death loss, movement from feedlots to pasture, and shipments to other feedlots for further feeding.

## UNITED STATES CATTLE ON FEED

Cattle and calves on feed for slaughter market in the United States for feedlots with capacity of 1,000 or more head totaled 10.6 million head on November 1, 2013. The inventory was 6 percent below November 1, 2012.

Placements in feedlots during October totaled 2.39 million, 10 percent above 2012. Net placements were 2.32 million head. During October, placements of cattle and calves weighing less than 600 pounds were 720,000, 600-699 pounds were 584,000, 700-799 pounds were 510,000, and 800 pounds and greater were 580,000.

Marketings of fed cattle during October totaled 1.86 million, 1 percent above 2012.

Other disappearance totaled 75,000 during October, 4 percent below 2012.

**Cattle on Feed Inventory on 1,000+ Capacity Feedlots – United States**

